

## Product Overview

Canine distemper/Canine adenovirus (CDV/CAV) are both causative agents of canine respiratory diseases. WC CDV/CAV Antigen Rapid Diagnostic Test Strip can quickly detect canine distemper/canine adenovirus antigen in canine nasal fluid, throat secretions and saliva by immunochromatography.

## Test Principle

A specific antibody to CDV/CAV is immobilized on the detection line (T) of the nitrocellulose membrane, and another specific antibody to CDV/CAV is contained in the colloidal gold particles. As the antigen-antibody complex moves toward the detection line (T) by capillary action, it undergoes a second antigen-antibody reaction with another CDV/CAV-specific antibody in the detection line (T), and turns purple-red, and thus the result is judged.

## Materials Provided

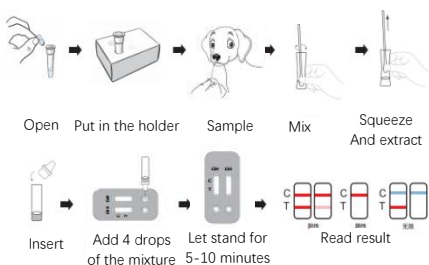
CDV/CAV antigen rapid diagnostic test strips contain the following materials:

1. CDV/CAV test strip
2. Bottled buffer solution
3. Buffer solution holder
4. Disposable dripper
5. Sterile cotton swab
6. Instruction manual

## Instructions

1. Peel off the sealing film of the buffer solution collection tube and put it into the buffer solution holder;
2. Open the package and take out the test strip, and place it flat on a spacious and dry surface;
3. Collect the dog's nasal fluid, throat secretions or saliva with a cotton swab at room temperature, insert it into the buffer solution tube immediately, mix it, and squeeze it by hand 5-10 times;
4. Cover the dripper, and slowly add 4 drops of the mixed solution into the sample hole upside down;
5. When the reaction is in progress, a purple-red band can be seen moving in the reaction window in the middle of the test paper;
6. Read the results within 5-10 minutes, and the results after 10 minutes are considered invalid.

### < Method of Use >



## Result Determination

This product determines the result by whether the test line (T) and the control line (C) develop color.

- If the purple-red bands develop in both the control line (C) and the test line (T) indicate that the test sample contains CDV/CAV antigen, as shown in Figure 1);
- If the test line (T) does not develop color, it means that the test sample does not contain CDV/CAV antigen, as shown in Figure 2);
- If the control line (C) is blue, it means that the operation process is incorrect or the test card is invalid, please test again, as shown in Figure 3).

### 1) Positive result



### 2) Negative result



### 3) Invalid result



The color shade of the purple-red line at the test line (T) is directly related to the CDV/CAV antigen content in the test object. When the antigen content in the test substance is high, the line at the test line (T) may appear, and then the purple-red may gradually fade or even disappear. At this time, it is recommended to dilute the sample by 10 times before testing.

## Precautions

1. Only for veterinary diagnosis;
2. Do not ingest food or smoke when collecting samples;
3. This product is very sensitive to humidity, so pay attention to the decline in function caused by humidity;
4. When taking out the product, avoid touching the detection line with hands or other foreign objects;
5. Avoid being infected by unknown viruses when collecting samples;
6. Wear disposable gloves when collecting potentially infectious substances, and wash your hands afterwards;
7. When using, pay attention to repeated freezing and thawing may cause false negative or false positive;
8. Test samples used within 3 days need to be stored at 2-8°C, and those used for more than 3 days need to be frozen at -20°C.

## Test Limitation

Even if the WC test strip can accurately detect CDV/CAV antigen, there may be chance for false positives and false negatives. Therefore, it is necessary to combine the test results with clinical symptoms and make a comprehensive judgment based on the doctor's experience.

## Preservation and Valid Period

Store airtight at room temperature (2-30°C), do not freeze. Valid for 24 months from date of manufacture.